

5TH ANNUAL CAPE COASTAL CONFERENCE

Coordinating a Regional Response to Natural Disasters on
Cape Cod

Phil Burt, Barnstable County
Regional Emergency Planning Committee



BCREPC
BARNSTABLE COUNTY
REGIONAL EMERGENCY PLANNING COMMITTEE

BARNSTABLE COUNTY'S ROLE IN EMERGENCY RESPONSE AND EMERGENCY MANAGEMENT

1. Quick background
2. The Multi-Agency Coordination Center (MACC)
3. Our decision-making process
4. The Cape Cod Emergency Traffic Plan



BARNSTABLE COUNTY REGIONAL EMERGENCY PLANNING COMMITTEE

- Emergency Planning Division of BCDHE
- “All-Hazards” Planning Committee
- Coordinates Hazardous Materials Reporting on Cape Cod
- Facilitates the Regional Sheltering Plan
- Oversees the Barnstable County Incident Management Team
- Operates the “MACC”



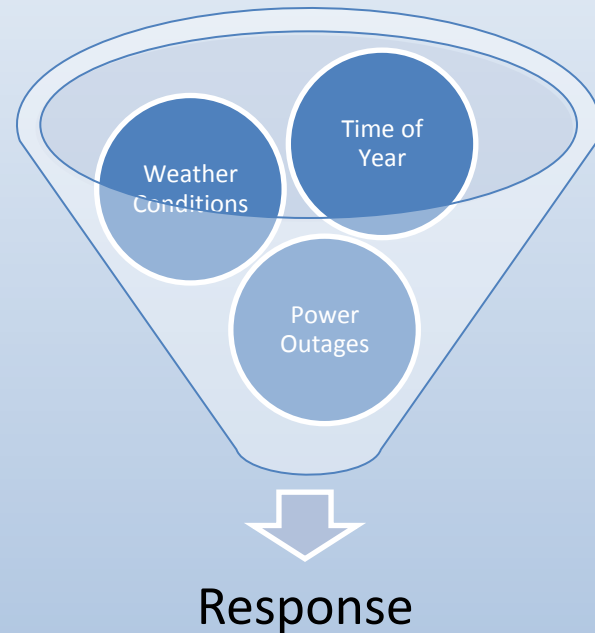
THE MULTI-AGENCY COORDINATION CENTER

- Similar to an Emergency Operations Center
- Resource acquisition
- Situational awareness
- Public information
- Emergency Shelter operational support
- Agency representatives – utilities, state agencies
- Staffed by the BCIMT



THE DECISION-MAKING PROCESS

- Digesting forecast information
- “Polling” public safety partners
- Considerations – time of year, duration of impact, type and degree of impact, post-storm conditions, lead time
- Conference Call(s) with public safety, elected officials, utilities, NGOs
- Synthesize factors to develop best plan of action



THE CAPE COD EMERGENCY TRAFFIC PLAN

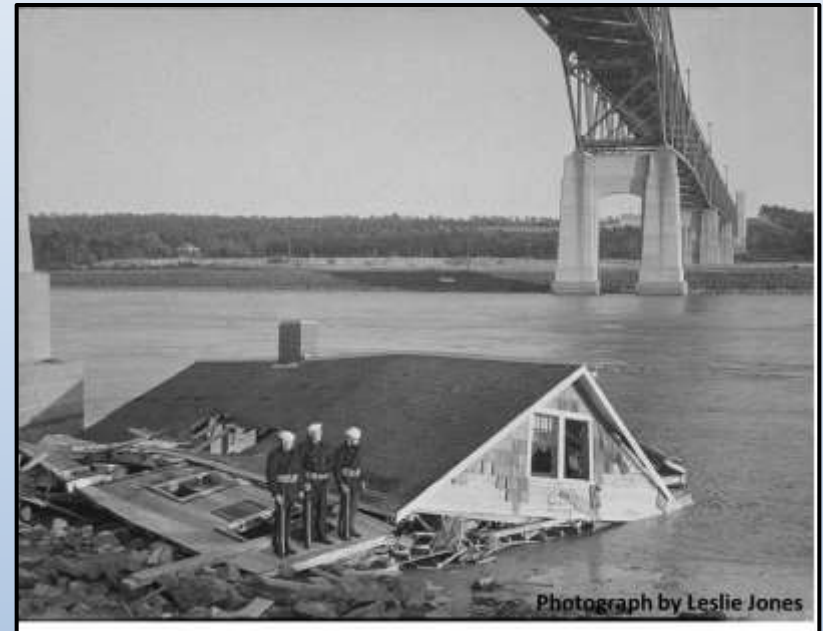
- A State of MA Plan
- Not an evacuation plan
- Initiated by the MA Emergency Management Agency at the governor's order
- Revised in 2016
- Storm considerations – time of year, duration of impact, type and degree of impact, post-storm conditions, lead time
- Consultation with local officials, state officials, military officials



Courtesy: Boston Globe

TAKE HOME MESSAGE

- Most of us have *never experienced anything close* to a storm like Harvey, Irma or Maria at their worst
- A storm like the 1938 Hurricane would be a landscaping-changing storm for Cape Cod.
- Walk yourself through a disaster in the context of your daily life and make the easy preparations now.



Courtesy: NWS Boston