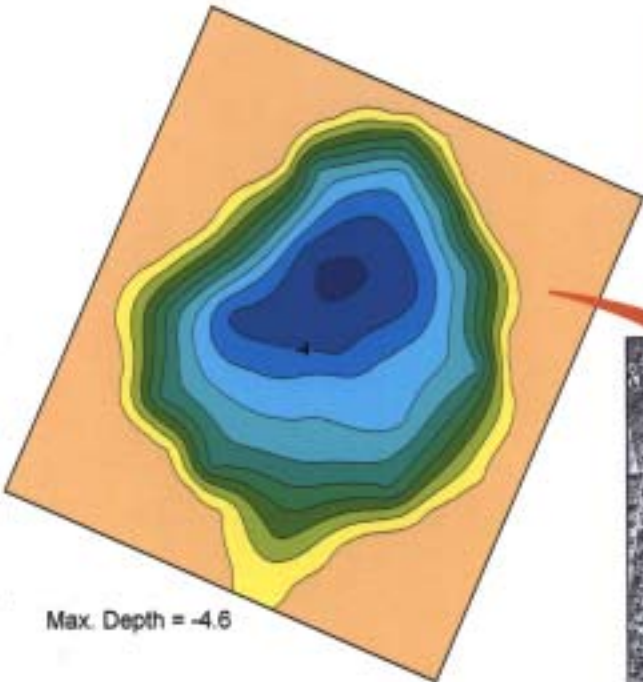
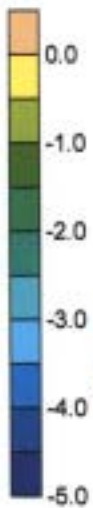
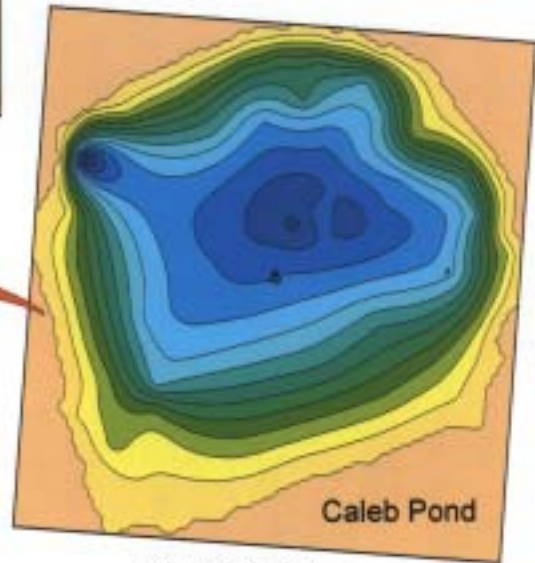
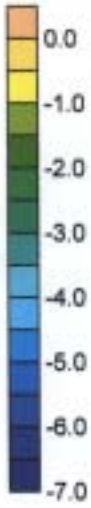


Bathymetry of Several Waquoit Bay Kettle Hole Ponds

(All depths in feet.)

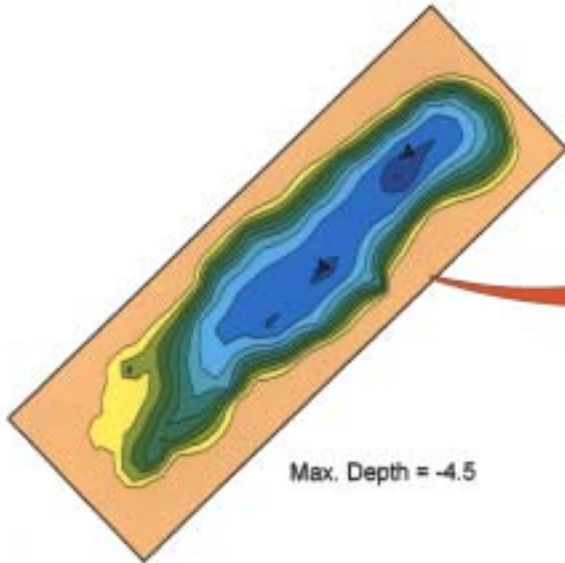
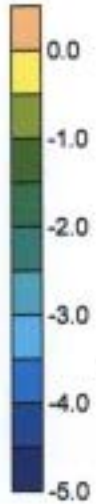


Max. Depth = -4.6



Caleb Pond

Max. Depth = -6.5

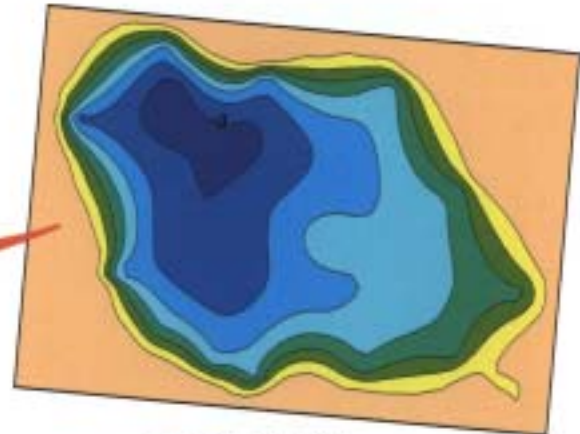
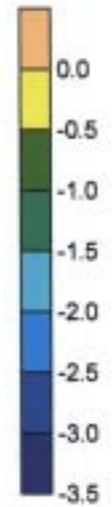


Max. Depth = -4.5



Waquoit Bay

Notes:
1. Color scheme is the same for all plots but depth range varies. See maximum depth (navy blue color) for each plot.
2. Datum: Approx. MHW.



Max. Depth = -3.3